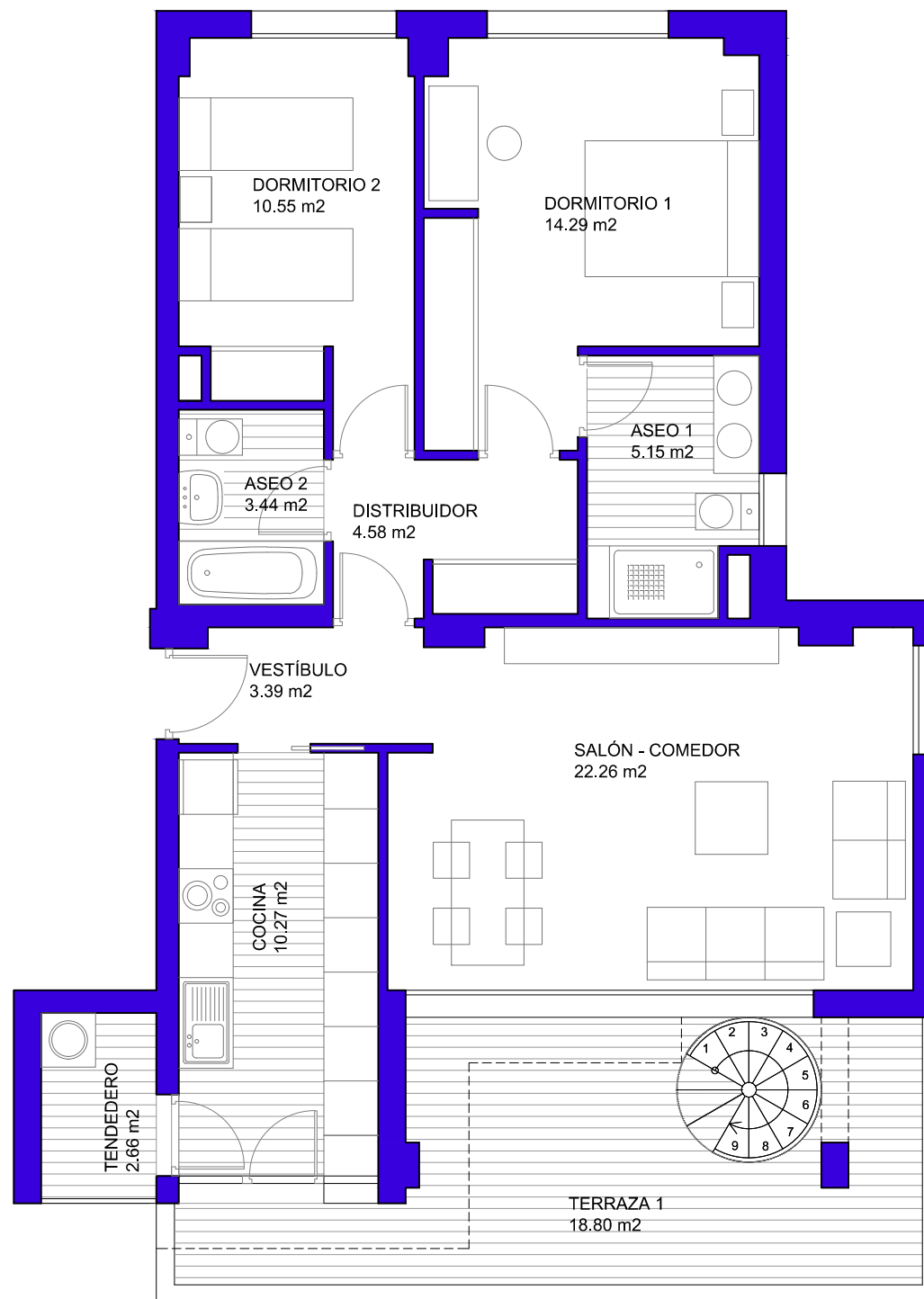
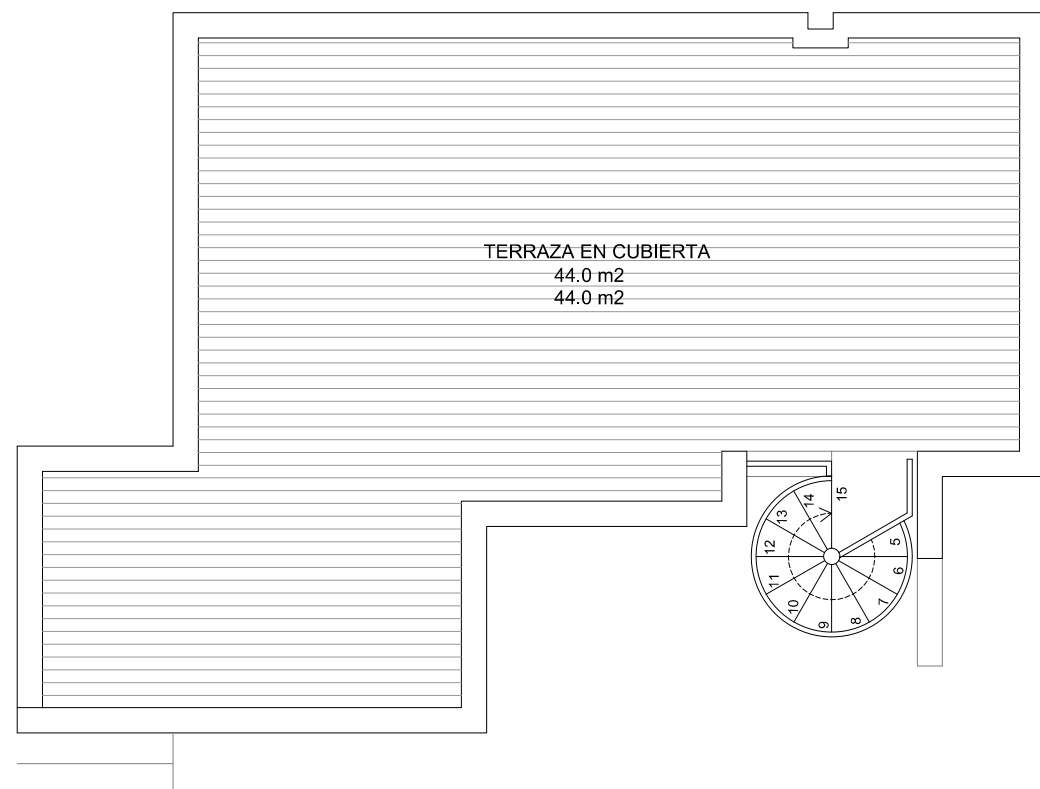


74 VIVIENDAS, GARAJE TRASTEROS Y PISCINA

Parcela 13.2.2 - "Cristo de Rivas"
Rivas Vaciamadrid (MADRID)

VIVIENDA TIPO 15 PORTAL 2 - 5º A

| Superficies aproximadas | m2 |
|--------------------------|--------|
| Sup. útil interior | 76.31 |
| Sup. útil terrazas | 18.80 |
| Sup. const. vivienda | 93,28 |
| Sup. const. con z.c. | 112,11 |
| Sup. terr.azotea./jardín | 44.00 |



**EL CRISTO
DE RIVAS I**

S.COOP.MAD.