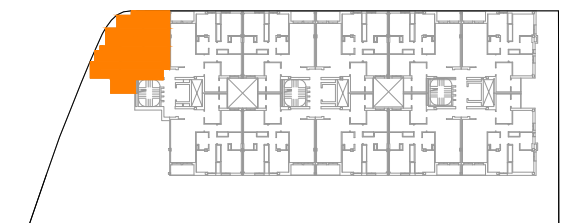
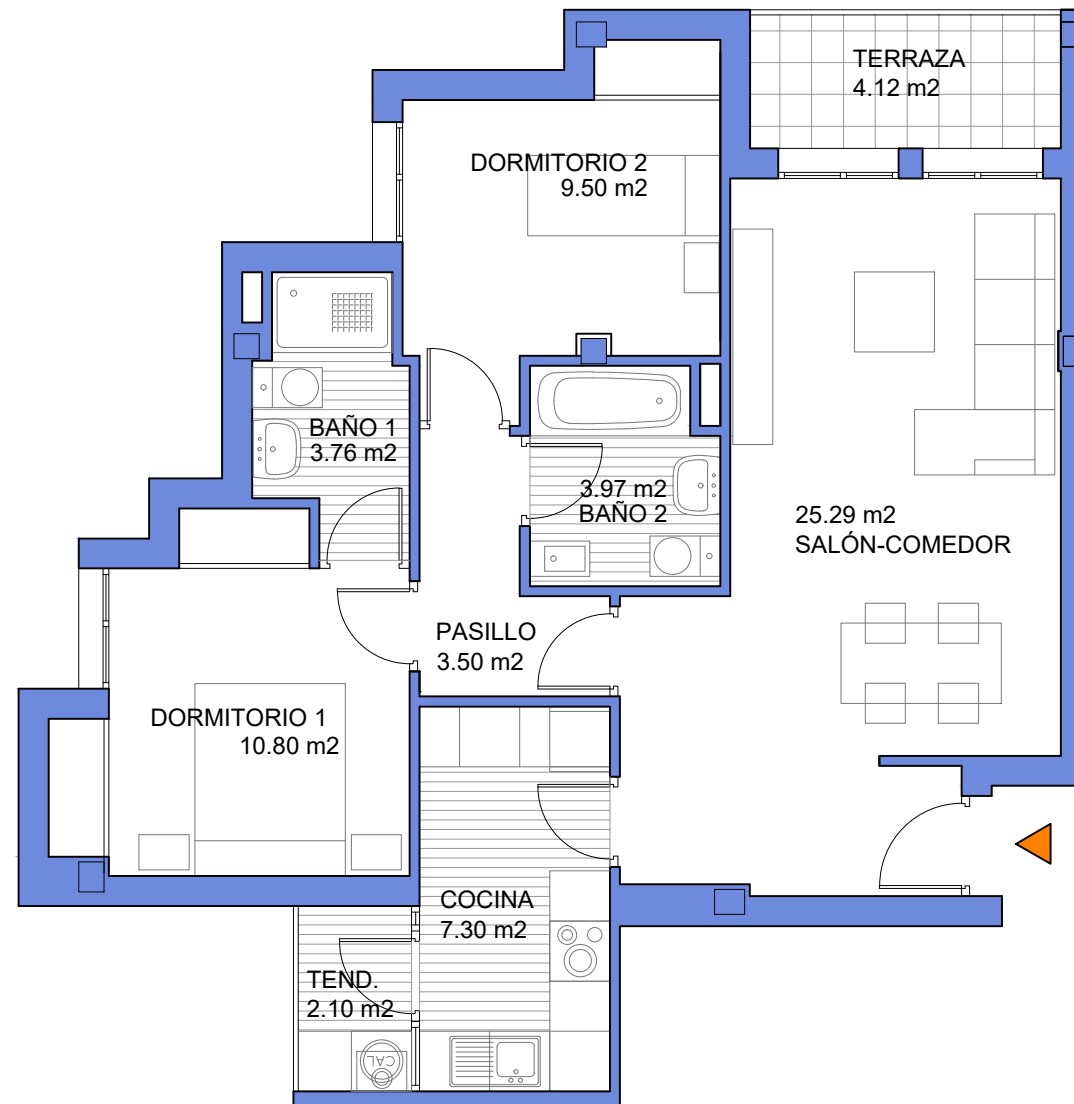


# 30 VIVIENDAS, GARAJE TRASTEROS Y PISCINA

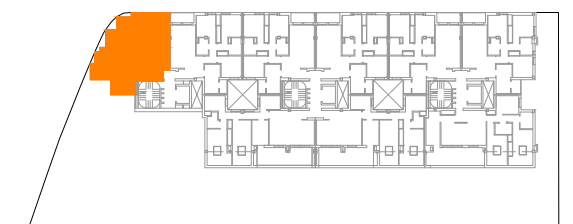
Parcela PR-2.1 - "Prado Manzano"  
Collado Villalba (MADRID)

## VIVIENDA TIPO 5 PORTAL 1 - 1º A / 2º A

Superficies aproximadas	m2
Sup. útil cubierta	70.34
Sup. const. con z.c.	103.46
Sup. terr.descub./jardín	-



PLANTA 1º



PLANTA 2º

