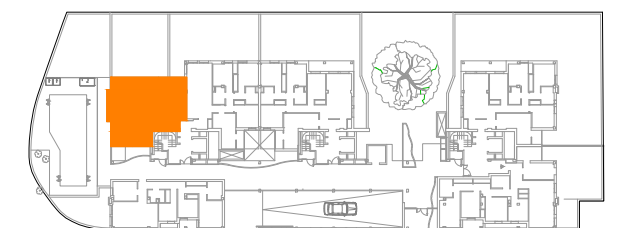
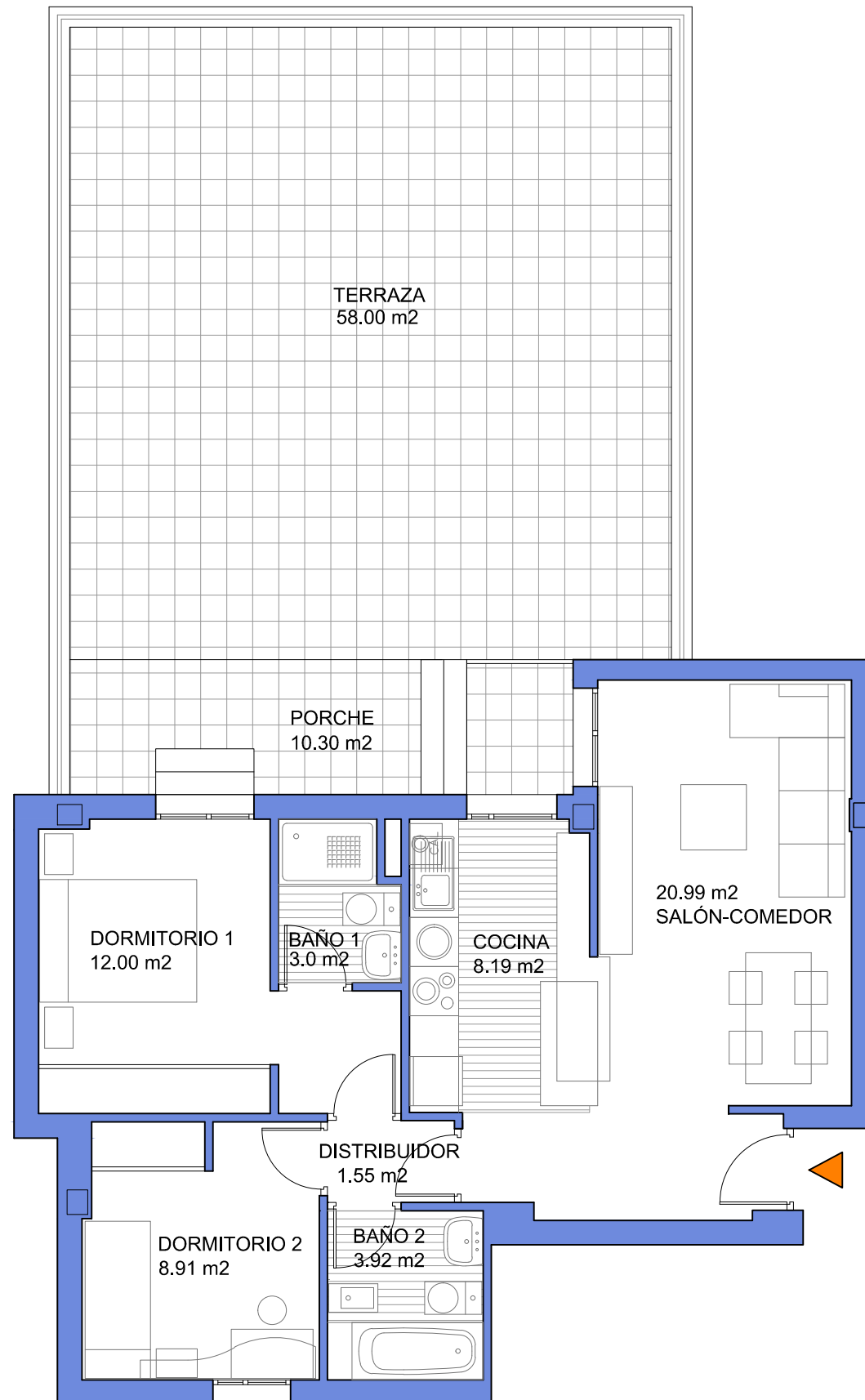


# 33 VIVIENDAS, GARAJE TRASTEROS Y PISCINA

Parcela PR-2.2 - "Prado Manzano"  
Collado Villalba (MADRID)

## VIVIENDA TIPO 18 PORTAL 1 - P. BAJA A

Superficies aproximadas	m2
Sup. útil cubierta	68.86
Sup. const. con z.c.	94.33
Sup. terr.descub./jardín	58.00



PLANTA BAJA