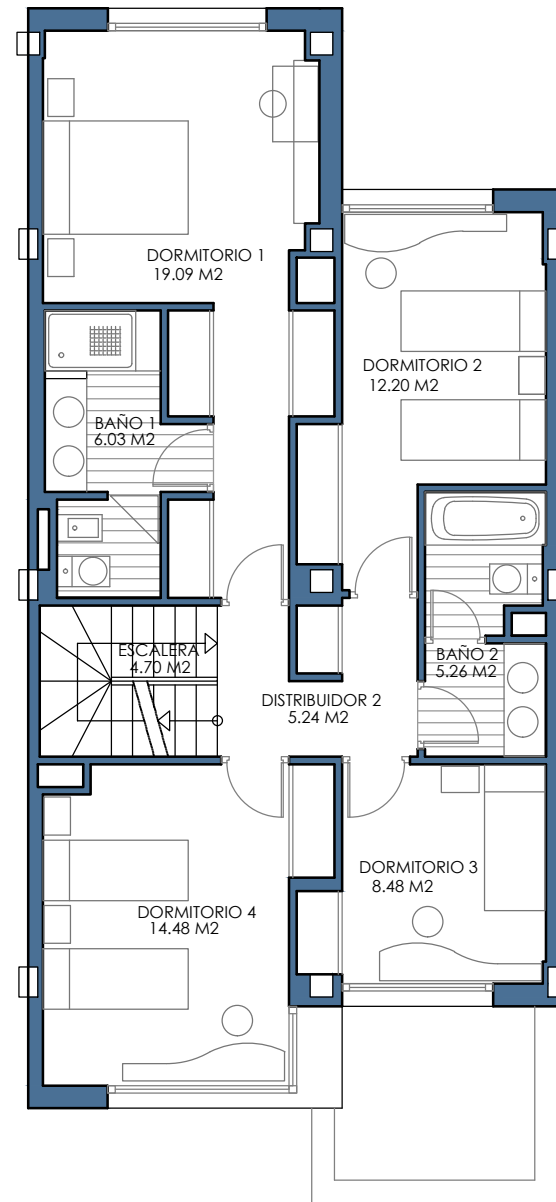
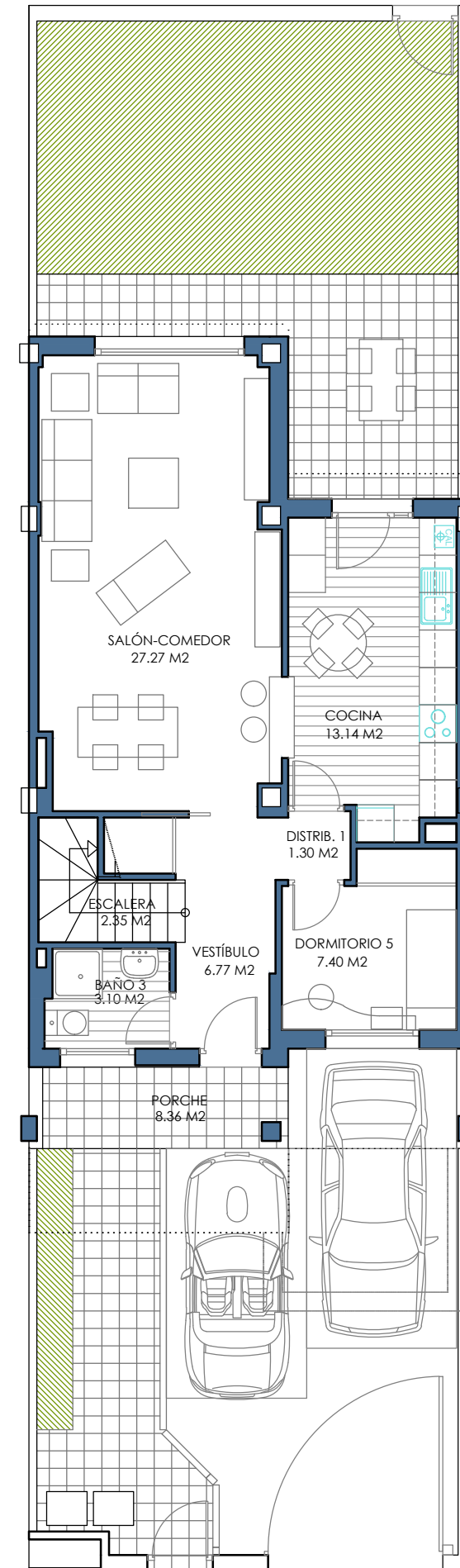


PLANTA DE CUBIERTA

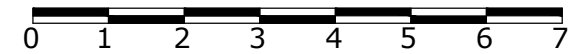


PLANTA 1ª



PLANTA BAJA

SUP. ÚTIL INTERIOR 141,38 M2  
 SUP. ÚTIL TOTAL 149,74 M2  
 SUP. CONSTRUIDA 175,94 M2  
 SUP. PARCELA 175,40 M2



VIV 7,9,13,15,19

TORNÉ + ROMERO \_ ARQUITECTOS